

ALL YOU NEED TO KNOW ABOUT REGULATION 14

And how by working together we can keep you compliant

WHAT IS REGULATION 14?

“Every window or other transparent or translucent surface in a wall or partition and every transparent or translucent surface in a door or gate shall, where necessary for reasons of health and safety:

It relates to the Workplace (Health, Safety & Welfare) Regulations 1992, which states:

1. Be of safety material or be protected against breakage of the transparent or translucent material
2. Be appropriately marked or incorporate features so as, in either case, to make it apparent.”

WHY IS IT IMPORTANT NOW?

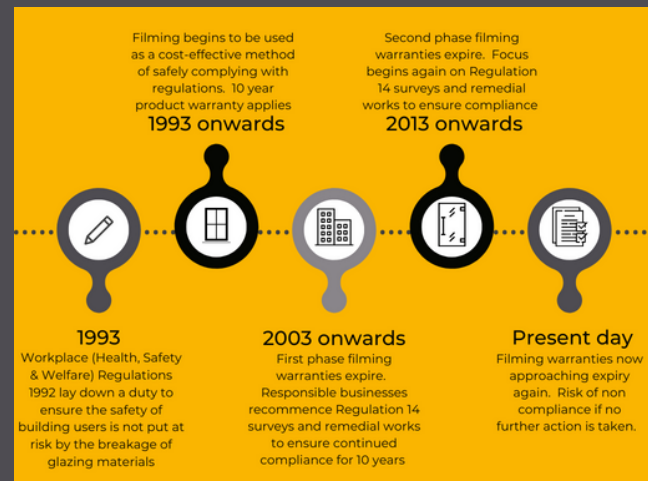
When the regulations became effective in 1993, a common method of ensuring compliance was the application of safety film. **Filming products typically carry a warranty of 10 years for each application.**

Have you checked your film is still compliant? Failure to meet the legal obligations of regulation 14 carries the risk of injury, costly litigation and reputational damage.

HOW CAN WE HELP KEEP YOU COMPLIANT?

By implementing our **Regulation 14: 8 Point Check List**, we can:

- identify whether you are compliant
- propose solutions to remedy areas of non-compliance
- complete the necessary works, providing you with compliance and warranty information



TO FIND OUT MORE OR TO BOOK YOUR SURVEY:

call: **0800 590 925**

email: **keepmecompliant@evander.com**

evander